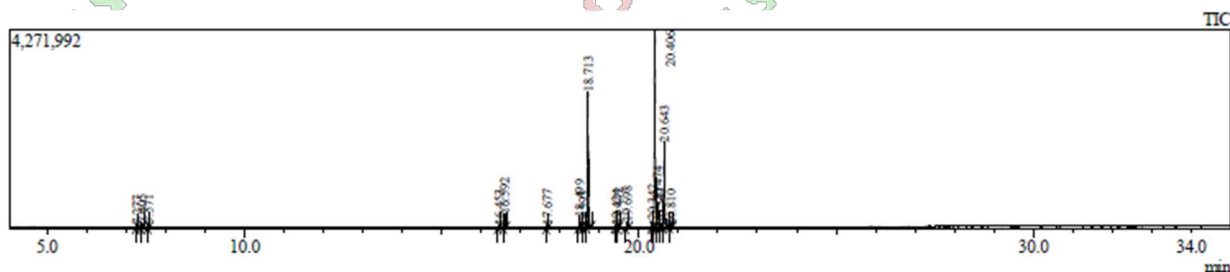


CERTIFICATE OF ANALYSIS

Product: Beef Tallow – Engineered for Soap – All Sizes
 Batch: xxxxxxxxxxx - xxxxxxxxxxx
 Test Date: March 06, 2026



Peak Report TIC					
R.Time	Base m/z	A/H	Area	Name	Area%
7.28	55.05	1.3	45583	3-Hexanol, 2-methyl-	0.3
7.41	57.10	1.2	92432	3-Heptanol	0.5
7.57	45.05	1.3	102740	2-Hexanol, 5-methyl-	0.6
16.45	55.10	1.4	76676	Myristoleic acid methyl ester, 9c-14:1	0.4
16.59	74.10	1.4	433128	Myristic acid, methyl ester, 14:0	2.4
17.68	74.05	1.5	60652	Pentadecanoic acid, methyl ester, 15:0	0.3
18.50	55.05	1.6	364846	Palmitoleic acid, methyl ester, 9c-16:1	2.1
18.59	55.10	2.1	28941	Hexadecenoic acid, methyl ester, 16:1	0.2
18.71	74.05	1.5	4266292	Palmitic acid, methyl ester, 16:0	24.0
19.42	74.10	1.5	67831	Hexadecanoic acid, 14-methyl-, methyl ester, 17:0	0.4
19.47	55.10	1.5	110215	cis-10-Heptadecenoic acid, methyl ester, 17:1	0.6
19.70	74.05	1.6	193493	Heptadecanoic acid, methyl ester, 17:0	1.1
20.34	67.05	1.5	205286	Linoleic acid, methyl ester, 9c,12c-18:2	1.2
20.41	55.10	1.6	6607168	Oleic acid, methyl ester, 9c-18:1	37.1
20.47	55.05	3.0	1637447	Elaidic acid, methyl ester, 9t-18:1	9.2
20.55	55.05	2.6	213541	Vaccenic acid methyl ester, 18:1	1.2
20.64	74.05	1.8	3223169	Stearic acid, methyl ester, 18:0	18.1
20.81	67.10	2.7	63922	Octadecadienoic acid, methyl ester, 18:2	0.4
			17793362		100.0

Compound	Firestone 2013 Found	Beef Tallow Spec (%)
18:1	47.5	31-50
18:0	18.1	18.9-40
16:0	24.0	20-37
16:1	2.3	1-9
14:0	2.4	1-6
18:2	1.6	1-5
15:0	0.3	1-3
17:0	1.5	1-3
Saturated Fatty Acids 46.3%		
Monounsaturated Fatty Acids 50.8%		
Polyunsaturated Fatty Acids 1.6%		

Using:

GC/MS Testing methods

Firestone "Physical and Chemical Characteristics of Oils, Fats, and Waxes, 3rd Ed." standards.

I, DEREK HODGES, attest that the above GC/MS results are independent from Essential Depot, Inc. for the stated product.

Certified



Derek G. Hodges
President & CEO
ESSENTIAL DEPOT INC.

IMPORTANT: All information provided is believed to be accurate and complete. The data provided is representative of the product quality on the date of analysis for the lot number indicated. This certificate of analysis may not include all the constituents of the product. Persons using this information should make their own determination regarding its suitability for their application. This certificate of analysis shall not in any way limit or preclude the operation and effect of the applicable terms and conditions of sale.