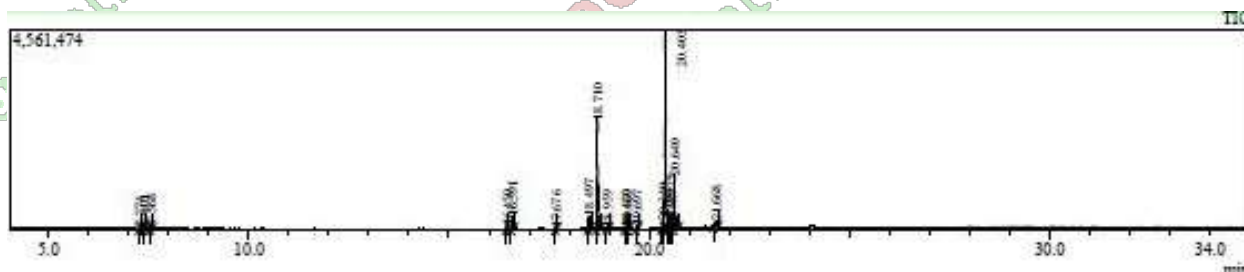


CERTIFICATE OF ANALYSIS

Product: Beef Tallow - LIQUID – All Sizes
 Batch: xxxxxxxxxxx - xxxxxxxxxxx
 Test Date: March 12, 2026



Peak Report TIC					
R.Time	Base m/z	A/H	Area	Name	Area%
7.27	55.10	1.2	48138	4-Heptanol	0.3
7.40	57.10	1.3	113144	3-Heptanol	0.7
7.57	45.05	1.3	120917	2-Hexanol, 5-methyl-	0.7
16.45	55.05	1.4	100423	Myristoleic acid methyl ester, 9c-14:1	0.6
16.59	74.05	1.4	378039	Myristic acid, methyl ester, 14:0	2.3
17.68	74.05	1.4	44319	Pentadecanoic acid, methyl ester, 15:0	0.3
18.50	55.05	1.5	435022	Palmitoleic acid, methyl ester, 9c-16:1	2.6
18.71	74.05	1.5	3691389	Palmitic acid, methyl ester, 16:0	22.1
18.96	85.00	1.8	70329	Unidentified	0.4
19.42	74.05	1.4	57965	Hexadecanoic acid, 14-methyl-, methyl ester, 1	0.3
19.47	55.10	1.5	104588	cis-10-Heptadecenoic acid, methyl ester, 17:1	0.6
19.70	74.05	1.6	123543	Margaric acid methyl ester, 17:0	0.7
20.34	81.10	1.5	274782	Linoleic acid, methyl ester, 9c, 12c-18:2	1.6
20.40	55.05	1.6	7144847	Oleic acid, methyl ester, 9c-18:1	42.8
20.47	55.05	3.3	1383823	Elaidic acid, methyl ester, 9t-18:1	8.3
20.55	55.05	2.4	167576	Vaccenic acid, methyl ester, 18:1	1.0
20.64	74.05	1.7	2070709	Stearic Acid, methyl ester, 18:0	12.4
21.67	85.00	3.4	380889	Unidentified	2.3
			16710442		100.0

Compound	Firestone 2013 Found	Beef Tallow Spec (%)
18:1	52.1	31-50
18:0	12.4	18.9-40
16:0	22.1	20-37
16:1	2.6	1-9
14:0	2.3	1-6
18:2	1.6	1-5
15:0	0.3	1-3
17:0	1.0	1-3
Saturated Fatty Acids 38.1%		
Monounsaturated Fatty Acids 54.7%		
Polyunsaturated Fatty Acids 1.6%		

Using:

GC/MS Testing methods

Firestone "Physical and Chemical Characteristics of Oils, Fats, and Waxes, 3rd Ed." standards.

I, DEREK HODGES, attest that the above GC/MS results are independent from Essential Depot, Inc. for the stated product.

Certified



Derek G. Hodges
President & CEO
ESSENTIAL DEPOT INC.

IMPORTANT: All information provided is believed to be accurate and complete. The data provided is representative of the product quality on the date of analysis for the lot number indicated. This certificate of analysis may not include all the constituents of the product. Persons using this information should make their own determination regarding its suitability for their application. This certificate of analysis shall not in any way limit or preclude the operation and effect of the applicable terms and conditions of sale.